



# KEY TAGS

a collection that can fit  
any business character



FREE BACK GROUND  
PMS COLOR MATCH !!

KC333 RED



KC333 BLACK



KC333 BLUE

## KEY TAG

Sleek electroplated body with one side plastic plate insert and black leather strap. Split ring

Imprint Methods: Silkscreen

Imprint Area: 1-1/4" H x 5/8" W

Packaging: paper box. Weight: 50lbs/480 pcs

100+	250+	500+	1000+	2500+ (5R)
3.60	3.30	3.00	2.80	2.60



Standard Packing

Price includes one color/one position screen imprint

Set up charge: \$50.00 (V) per color/position. Repeat set up charge: \$25.00 (V) per color/ position.  
Extra color/ position silkscreen running charge add \$0.25 (V). Less than minimum: \$30.00 (V).  
Standard production time: 7~ 10 working days [Our imprint ink and Barrel Coatings are Lead Free.](#)

# Key-Tag Pens



KT210

**KT210** Brass Ball Pen  
with Split Key Ring



BLACK



KT200

KT-200 MATTE BLACK

**KT200** Aluminum Ball Pen  
with Carabiner Hook



MATTE GREEN

SATIN CHROME

MATTE BLUE

MATTE RED

**BALLPOINT**

• Choice of KT210 with split key ring, brass construction with enamel color coating.

Or KT200 with carabiner-hook, aluminum construction with metallic color finish.

Imprint Methods: Silkscreen/ or Laser engraving.

KT210 is engraved in gold/

KT200 is engraved in matte silver

Imprint Area: Silkscreen: 3/4"H x 1-1/4"W

Engraving: 1/4"H x 1-1/4"W

Weight: 27 lbs/500 pcs

(5R)

	100+	250+	500+	1000+	2500+
KT210	2.30	2.00	1.80	1.70	1.60
KT200	2.60	2.30	2.100	2.00	1.90

Price includes one color/one position laser engraving or screen imprint

• Less-than Minimum: \$30.00(v)

• 2nd Location Run Charge: \$0.25(v) ea.

• Oxidation Charge: \$0.25(v) ea.

• Standard Packaging: Clear Cello Wrap

• Lead Time: 7-10 Working Days.

• **Our Imprint Ink and Barrel Coating are Lead Free**



KT551 with Split-Ring Attachment



KT552 with Carabiner Attachment

## L.E.D. Key Tags

- L.E.D. KEY LIGHT** • Brass construction  
 • Push button • Batteries Included

Imprint Methods: Silkscreen/Laser engraved in gold. Oxidation black & laser chrome are available with additional charge \$0.25(v)

Imprint Area: silkscreen: 3/4"H x 1-1/4"W  
 engraving: 5/16"H x 1-1/4"W

Packaging: free paper box. Weight: 20 lbs/250 sets



Standard packaging

	100+	250+	500+	1000+	(5R) 2500+
KT551	2.90	2.60	2.40	2.20	2.10
KT552	3.20	2.90	2.70	2.50	2.40

Price includes one color/one position laser engrave or screen imprint

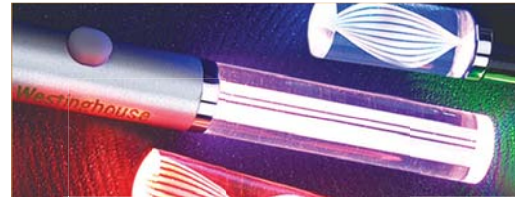
- Less-than Minimum: \$30.00(v)
- Chrome Etching: \$0.25(v) ea.
- Set up/Location: \$50.00(v)
- 2nd Location Run Charge: \$0.25(v) ea.
- Standard Packaging: Clear Cello Wrap
- Lead Time: 7-10 Working Days.
- Oxidation Charge: \$0.25(v) ea.
- Gel Ink is Optional @ \$0.25(v)
- **Our Imprint Ink and Barrel Coating are Lead Free**



KT554  
with Split-Ring Attachment



KT553 with Split-Ring Attachment



## L.E.D. Key Tags

**RAINBOW L.E.D. KEYLIGHT** • Bright L.E.D. light with rotating rainbow colors • Clear barrel with choice of short-straight light or long-spiral light

• Batteries included

Imprint Methods: Silkscreen/Laser engraved in gold

Imprint Area: silkscreen: 3/4"H x 1-1/4"W

engraving: 5/16"H x 1-1/4"W

Packaging: free paper box. Weight: 22 lbs/250 pcs



Standard packaging

	100+	250+	500+	1000+	(5R) 2500+
KT554	3.70	3.40	3.100	2.90	2.80
KT553	3.60	3.30	3.00	2.80	2.70

Price includes one color/one position laser engrave or screen imprint

- Less-than Minimum: \$30.00(v)
- Chrome Etching: \$0.25(v) ea.
- Set up/Location: \$50.00(v)

- 2nd Location Run Charge: \$0.25(v) ea.
- Standard Packaging: Clear Cello Wrap
- Lead Time: 7-10 Working Days.

- Oxidation Charge: \$0.25(v) ea.
- Gel Ink is Optional @ \$0.25(v)
- **Our Imprint Ink and Barrel Coating are Lead Free**



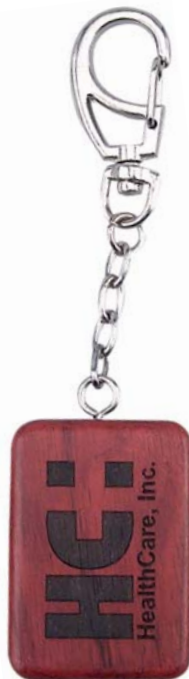
WK01



WK02



WK03



WK04



WK05



WK06

WK01 ROSEWOOD ROUND SHAPE KEY TAG

WK02 ROSEWOOD ROUND SHAPE KEY TAG W/ 1 SIDE EPOXY COATED IMPRINT

WK03 ROSEWOOD ROUND SHAPE KEY TAG W/ 2 SIDE EPOXY COATED IMPRINT

WK04 ROSEWOOD RECTANGLE SHAPE KEY TAG

WK05 ROSEWOOD RECTANGLE SHAPE KEY TAG W/ 1 SIDE EPOXY COATED IMPRINT

WK06 ROSEWOOD RECTANGLE SHAPE KEY TAG W/ 2 SIDE EPOXY COATED IMPRINT

## WOOD KEY TAG

Small Expense, Big Impact. Custom Cast, Any Shapes, please call factory for more information

Imprint Methods: Silkscreen with Epoxy Dome/ Laser

Imprint Area: Round Shape: 1-3/8" diameter

Rectangle Shape: 1" H x 1-1/2" W

Oval Shape: 1-1/2" H x 1" W

Weight: 25 lbs/400 pcs (WK01, WK04, WK07)

27 lbs/400 pcs (WK02, WK05, WK08)

32 lbs/400 pcs (WK03, WK06, WK09)



WK07



WK08



WK09

WK07 ROSEWOOD OVAL SHAPE KEY TAG

WK08 ROSEWOOD OVAL SHAPE KEY TAG W/ 1 SIDE EPOXY COATED IMPRINT

WK09 ROSEWOOD OVAL SHAPE KEY TAG W/ 2 SIDE EPOXY COATED IMPRINT

	(5R)	100+	250+	500+	1000+	2500+
WK01		2.30	2.00	1.80	1.60	1.50
WK02		2.50	2.20	2.00	1.80	1.70
WK03		2.70	2.40	2.30	2.10	2.00
WK04		2.30	2.00	1.80	1.60	1.50
WK05		2.50	2.20	2.00	1.80	1.70
WK06		2.70	2.40	2.30	2.10	2.00
WK07		2.30	2.00	1.80	1.60	1.50
WK08		2.50	2.20	2.00	1.80	1.70
WK09		2.70	2.40	2.30	2.10	2.00

WK01/WK04/WK07: Price includes 1 position laser engrave

WK02/WK05/WK08: Price includes 1 side/ 1 color imprinting on any color background with epoxy sealing.

WK03/WK06/WK09: Price includes 2 side/ 1 color imprinting on any color background with epoxy sealing.

Set up charge: \$50.00 (V) per color/position. Repeat set up charge: \$25.00 (V) per color/ position.  
 Extra color/ position silkscreen running charge add \$0.25 (V). Less than minimum: \$30.00 (V).  
 Standard production time: 7~ 10 working days [Our imprint ink and Barrel Coatings are Lead Free.](#)